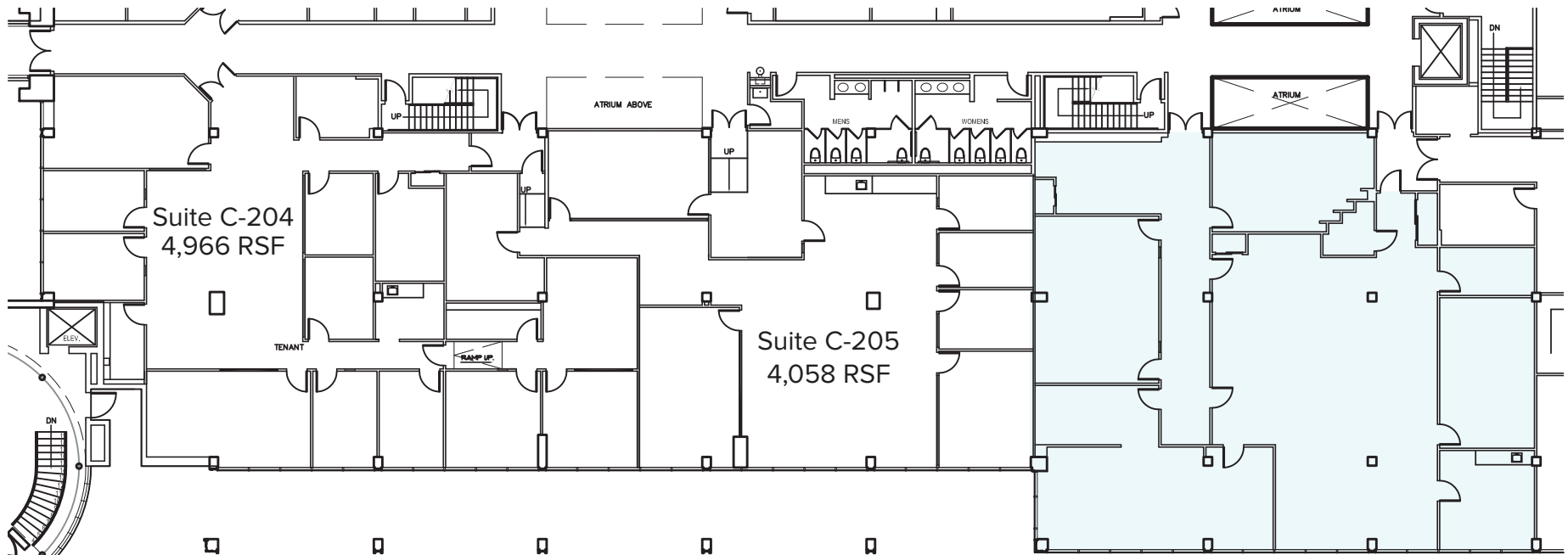
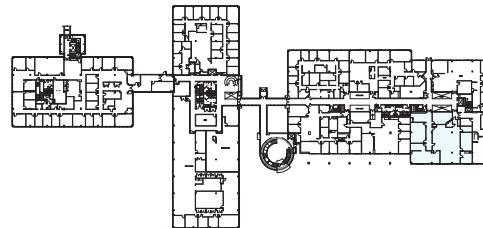


*international corporate center at rye*

BUILDING C | 2ND FLOOR : SUITE C206 : 5,322 SF



KEY PLAN



For leasing information, please contact:

Michael Gordon  
203.641.7951 | michael.gordon@cbre.com

Jacqueline Novotny  
203.358.6262 | jacqueline.novotny@cbre.com