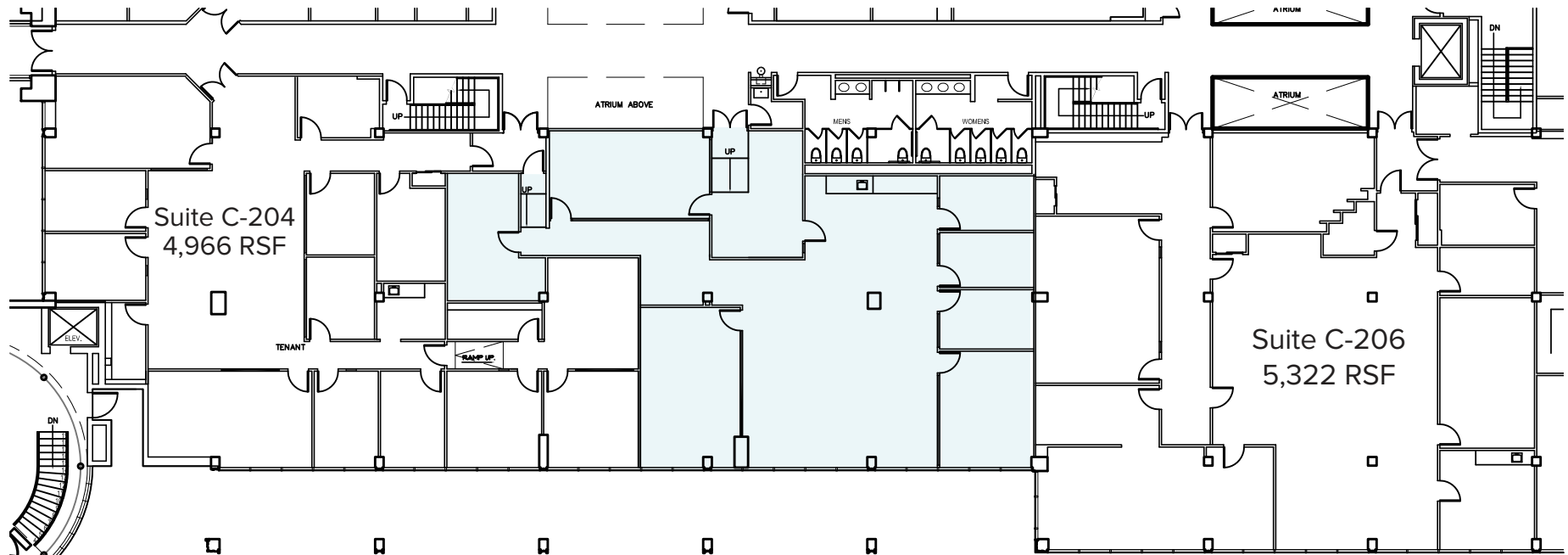
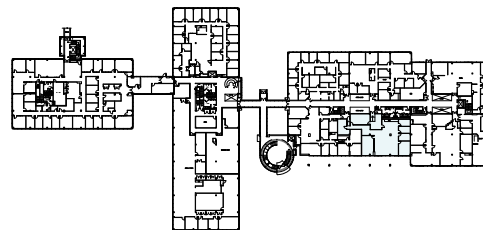


international corporate center at rye

BUILDING C | 2ND FLOOR : SUITE C205 : 4,072 SF



KEY PLAN



For leasing information, please contact:

Michael Gordon
203.641.7951 | michael.gordon@cbre.com

Jacqueline Novotny
203.358.6262 | jacqueline.novotny@cbre.com

Response Management LLC