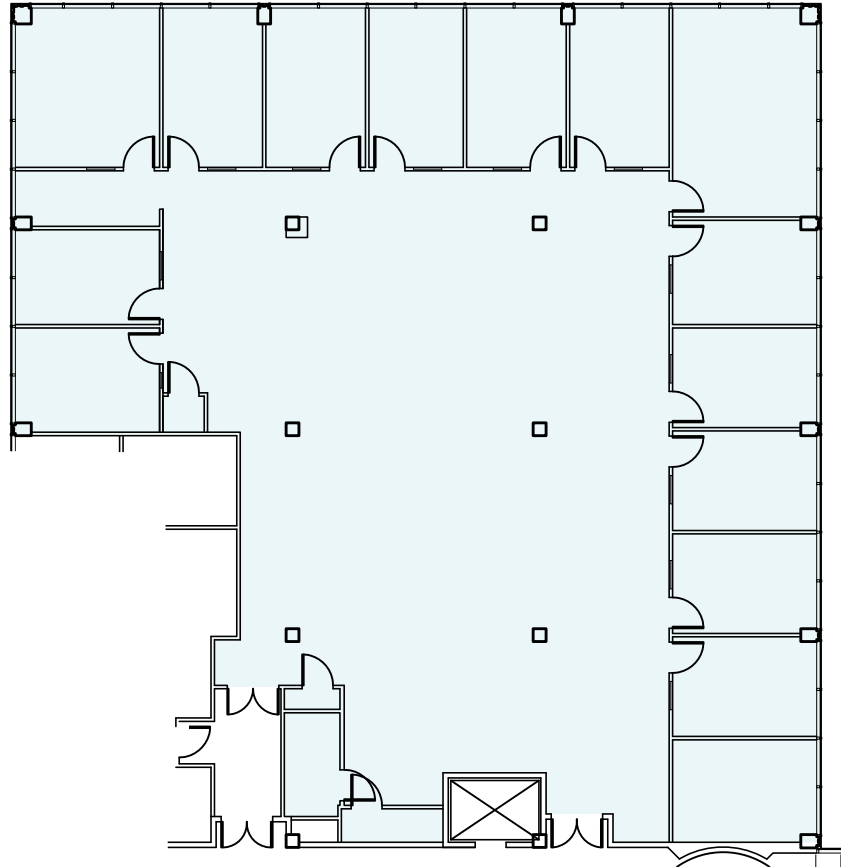
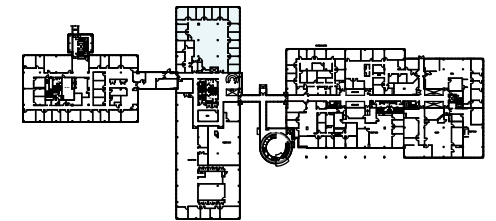


*international corporate center at rye*

BUILDING B | 2ND FLOOR : SUITE B204 : 6,872 SF



KEY PLAN



For leasing information, please contact:

Michael Gordon  
203.641.7951 | michael.gordon@cbre.com

Jacqueline Novotny  
203.358.6262 | jacqueline.novotny@cbre.com